

Thank You

For Choosing VantecUSA Product.

We are committed to providing you with the best service and support. If you have a problem with installing, getting the product to function or other product related question, please feel free to write to us. We will help you answer your question.

You can write to us at : support@vantecusa.com
For the latest Drivers, Manual and Frequently Asked Questions (FAQ), they are available at our website at vantecusa.com or write to us.

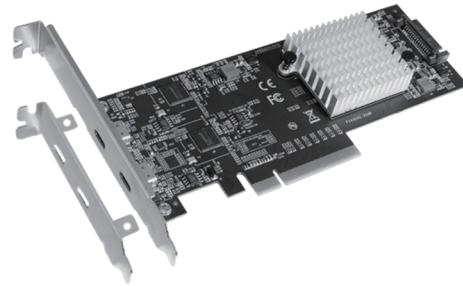


QRCode to product Page,
Drivers, Manual, and FAQ.

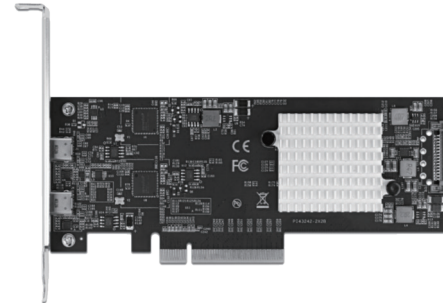
Thank you,
VantecUSA Support Team.



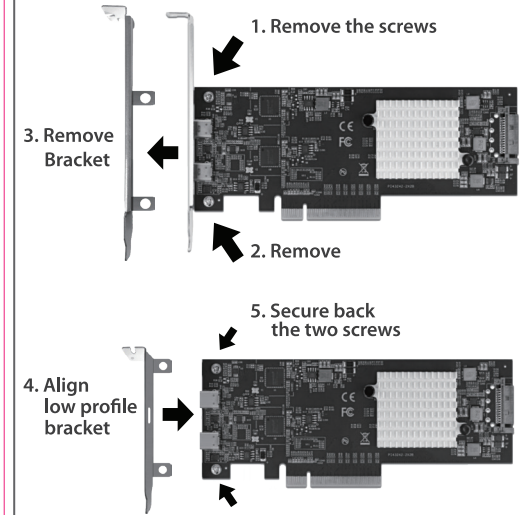
Installation Guide



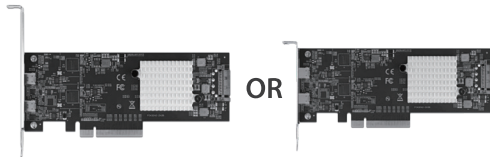
1. Verify the package contents.



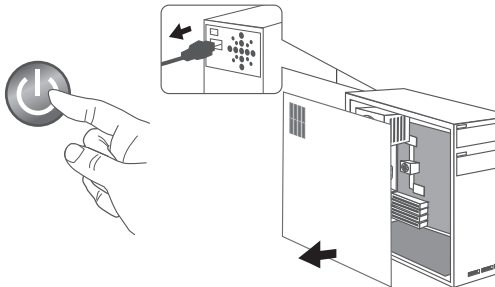
2. Before you unpack and take out your PCIe Card, please be aware that these are sensitive devices and can be damaged by Static Electricity. Please ground yourself before handling them and hold it by the edge of the PCIe card.



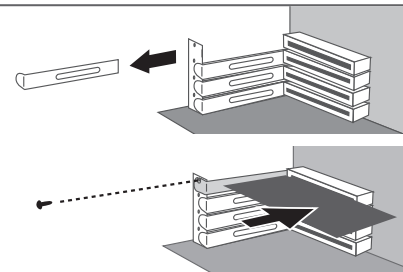
3. If you are adding this card into a Slim or Low Profile System, please replace the standard bracket with a Low Profile Bracket provided. Remove the two screws holding the standard bracket, replace it with the Low Profile Bracket and secure back the two screws holding the bracket.



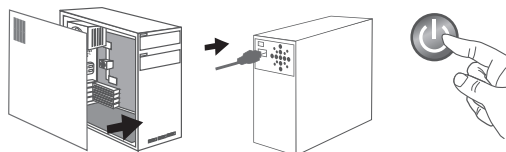
4. The PCIe Card is ready to be installed in your system.



5. Turn off the Computer System, MUST unplug the computer power cord from the wall outlet, wait 1-2 minutes, and remove the cover of the Computer System.

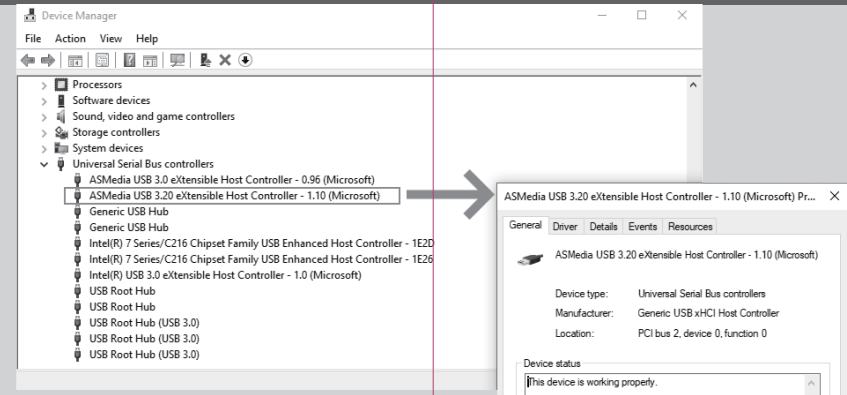


6. Locate a free PCIe x8, or x16 expansion slot and remove the plate covering the back aligned with the PCIe slot. Insert this new PCIe card into the PCIe slot, make sure the PCIe card contacts are fully inserted into the PCIe slot. Secure and fasten the PCIe card as documented in the Computer System manufacturer's documentation.



7. Place the case cover back on the Computer System. Reattached the power cord to the Computer System, plug back to the wall outlet, and power ON the System.

8. If you are running Windows 10 or 8, the drivers are already built into the OS and the Computer System will automatically search and install the drivers for you. You do not need to download or install any drivers yourself. If your Windows 10 or 8 is not up to date, please use the Windows update to update your Computer System with the latest updates. These updates will protect and get the latest drivers for any peripherals you are adding to your Computer System.



9. Upon completion, you should see this card listed in the Device Manager as "Asmedia USB 3.20 eXtensible Host Controller - x.xx (Microsoft)" shown. The Installed PCIe card is ready for use.

Information in this document is subject to change without notice.

Reproduction of these materials in any manner whatsoever without written permission is strictly forbidden.

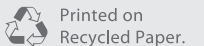
UGT-PCE340C



www.vantecusa.com

Copyright © 2021 Vantec Thermal Technologies. All Rights Reserved. All Registered Trademarks Belong to Their Respective Companies.

v1.01



Printed on
Recycled Paper.