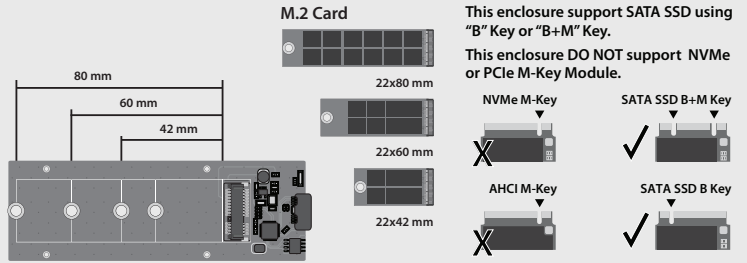


CAUTION Static Sensitive Devices Handle with Care

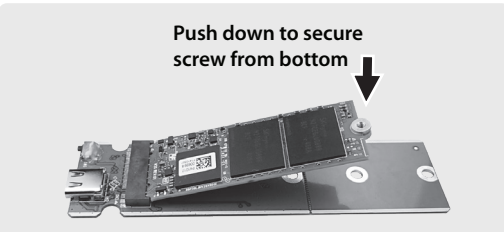
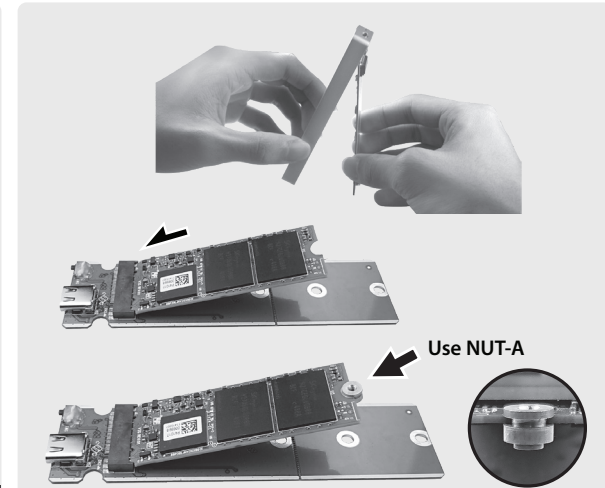
KNOW YOUR M.2 MODULE SIZE

To install your M.2 SSD module correctly, please follow the steps listed:

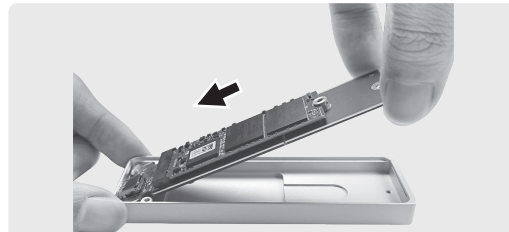


For your M.2 22x60 or 22x42, Use instruction on this page

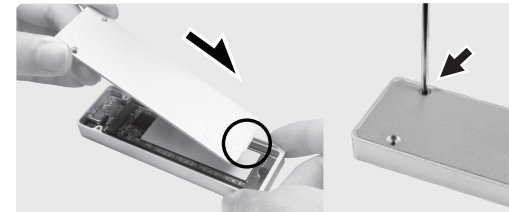
For your M.2 22x80 size, Use instruction on the back page



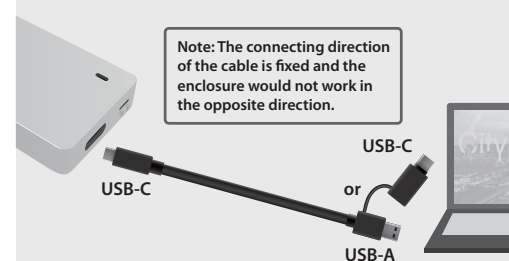
4. Push down the module and secure it with the screw (SCREW-B) from the back of the PCB onto NUT-A.



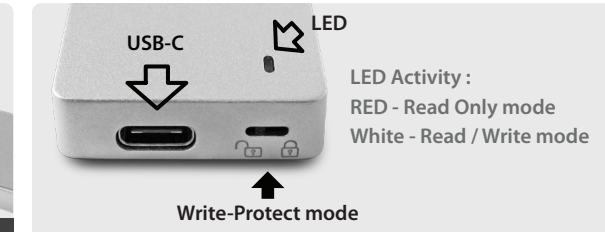
5. Insert the PCB back carefully by putting the connector side into the enclosure first aligning the USB-C and Lock Switch port to the opening correctly.



6. Once the M.2 is secured, replace the cover shown. Note the cover latch. Secure the cover using two SCREW-E to hold the cover in place.



7. Connect single end USB-C to your enclosure and the other end to your computer USB-C or to USB Type A port (NOT both).



NOTE :

For Write-Protect to function correctly, You MUST adjust Read Only or Read/Write mode before connecting USB to Computer

Preparing the newly installed SSD for use:

All NEW USB storage needs to be initialized, partition and formatted for the Operating System you are using before it can store data. For Windows OS, use Disk Management and for OS X, use Disk Utility.

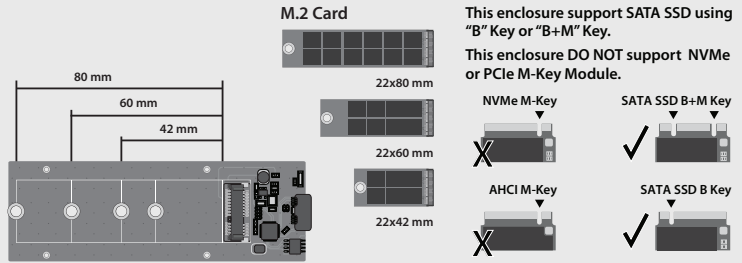
If the M.2 is not new and have important data already on the memory module, DO NOT initialize, it will erase all the DATA.

For detail, instruction refers to the FAQ "How to preparing a New storage, Hard Drive, or SSD for use with a system" on our website support section at www.vantecusa.com

CAUTION Static Sensitive Devices Handle with Care

KNOW YOUR M.2 MODULE SIZE

To install your M.2 SSD module correctly, please follow the steps listed:



For your M.2 22x80 size,
Use instruction on this page

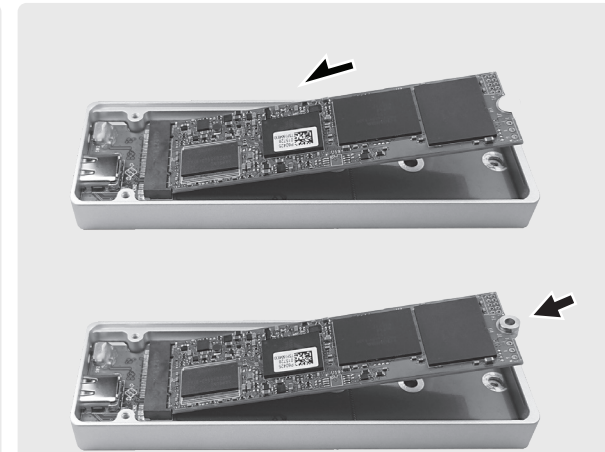
For your M.2 22x60 or 22x42,
Use instruction on the back page



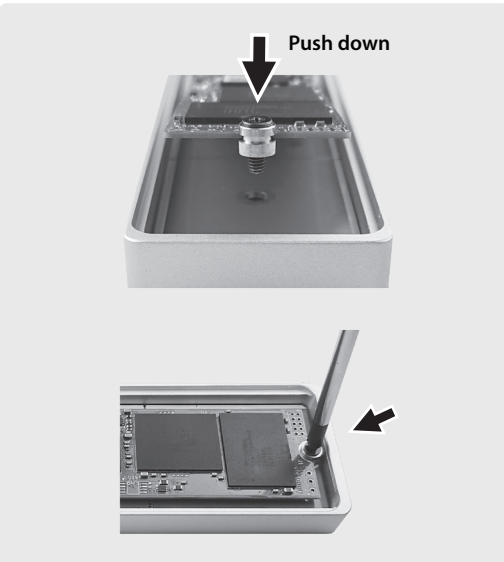
1. Verify the package contents.



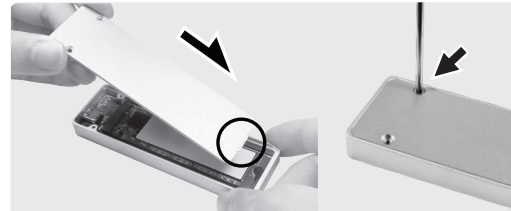
2. Hold the enclosure at the angle shown to remove the cover. Note the cover latch for locking the cover on one end.



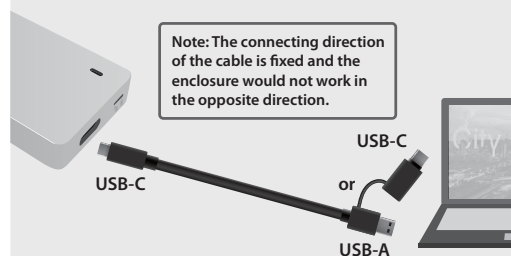
3. Insert at an angle the M.2 22x80 Module into the M.2 interface with label face up. Insert the NUT-D on to the semi-circular notch.



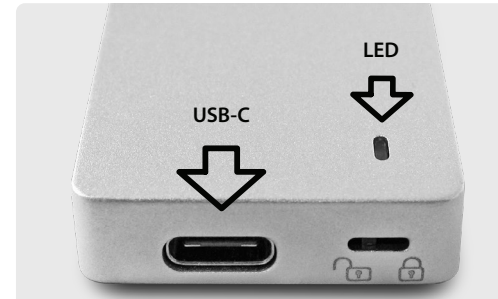
4. Insert the black screw (SCREW-C) thru NUT-D, push down the module and secure on to the enclosure.



5. Once the M.2 is secured, replace the cover shown. Note the cover latch. Secure the cover using two SCREW-E to hold the cover in place.



6. Connect single end USB-C to your enclosure and the other end to your computer USB-C or to USB Type A port (NOT both).



Write-Protect mode

LED Activity:
RED - Read Only mode
White - Read / Write mode

NOTE :

For Write-Protect to function correctly, You MUST adjust Read Only or Read/Write mode before connecting USB to Computer.

Preparing the newly installed SSD for use:
All NEW USB storage needs to be initialized, partition and formatted for the Operating System you are using before it can store data. For Windows OS, use Disk Management and for OS X, use Disk Utility.

If the M.2 is not new and have important data already on the memory module, DO NOT initialize, it will erase all the DATA.

For detail, instruction refers to the FAQ "How to preparing a New storage, Hard Drive, or SSD for use with a system" on our website support section at www.vantecusa.com